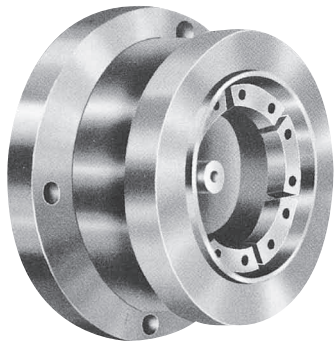


# CDO OUTSIDE-COLLET CHUCK

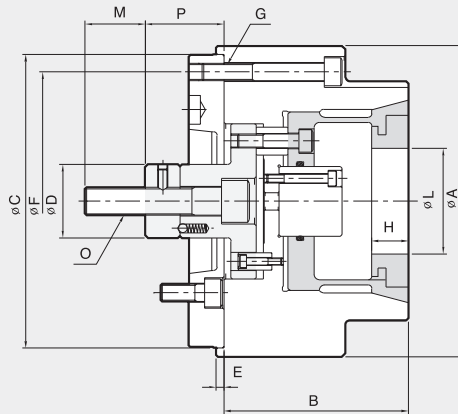
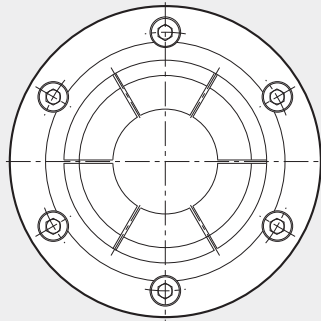


The CDO chuck has interchangeable top jaws that grip the outer diameter of the workpiece.

The CDO chuck pulls the workpiece flush with the locators before clamping to increase the accuracy of machining right and concentric angles.

Air sensing, which measures the proximity to a surface, is optional.

Air blowing, which cleans away debris before clamping, is optional.



## Dimensions

	A	B	C(h')	D	E	F	G	H	Lmax.	Lmin.	M	O	Pmax.	Pmin.
CDO-06	165	115	150	35	5	130	M12	30	50	15	36	M16	26	23
CDO-08	210	125	200	42	5	180	M12	35	90	80	36	M20	32	29
CDO-10	250	145	230	52	5	210	M16	45	130	80	46	M24	35	32
CDO-12	300	170	230	52	5	270	M16	50	180	100	50	M24	36	32

## Specifications

	Clamping Force (kgf)	Max. Drawbar Pull (kgf)	Collet Expansion (mm)	Plunger Stroke (mm)	Chucking Diameter (mm)		Max. Speed (r.m.p)	Weight (kg)	GD <sup>2</sup> (kgf.m <sup>2</sup> )
					Max	Min			
CDO-06	2800	1500	1.6	3	50	15	4500	11	0.11
CDO-08	4600	2500	1.6	3	80	40	4000	23	0.44
CDO-10	6500	3500	1.6	3	130	80	3300	49	1.76
CDO-12	7500	4000	2.0	4	180	100	2500	67	3.10